



Available to Order: Specialist Spindle, Window, Door and Woodworking Tools

We are able to supply an extensive range of tooling such as cutters, cutterheads and design tools for spindle moulders, tenoners and CNC machinery.

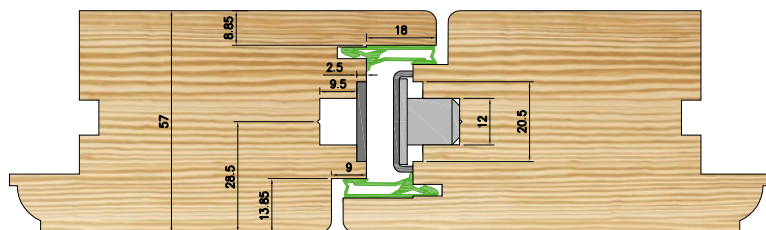
For more information, please get in touch with a member of our team.

☎ 08001 613613

French Door Multipoint Profile Head

Single Handle (eg Winkhaus FAB)

- Cut Master and Slave with one tool for French Doors with a single handle
- Head equipped with replaceable TC profile blades, scribing spurs and grooving tips for seals.
- Suitable for spindle moulders



NEW

French Door Multipoint Profile Head - Single Handle

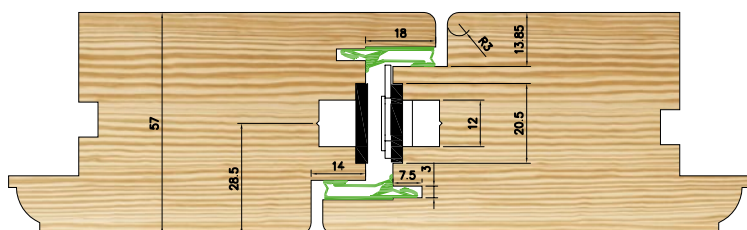
#	↔
WHI060A00620	30mm
WHI060A00630	1¼"

#	↔	
Spares		
WHI027T00001	Profile Tip	50 x 30mm C/S
WHI027T00010	Profile Tip	20 x 25mm C/S
WHI030T00001	TC Spur	14 x 14 x 2mm
WHI026T00066	3mm Grooving Tip	3mm

French Door Multipoint Profile Head

Double Handle (eg Winkhaus FGTE)

- Cut Master and Slave with one tool for French Doors with double handles
- Head equipped with replaceable TC profile blades, scribing spurs and grooving tips for seals.
- Suitable for spindle moulders



NEW

French Door Multipoint Profile Head - Double Handle

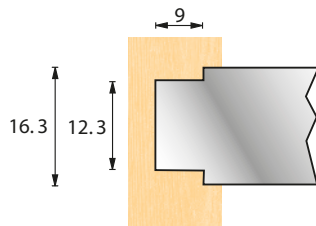
#	↔
WHI060A00600	30mm
WHI060A00610	1¼"

#	↔	
Spares		
WHI027T00002	Profile Tip	50 x 30mm C/S
WHI027T00010	Profile Tip	20 x 25mm C/S
WHI030T00001	TC Spur	14 x 14 x 2mm
WHI026T00066	3mm Grooving Tip	3mm
WHI026T00110	Radius Tips	TBG R3 DX

Euro Groove Head

16.3mm / Ø 150mm - Windows

- Designed to produce a stepped groove in wooden windows for accommodating recessed hardware.
- Fitted with standard 11 and 15mm reversible TC tips (overlapped to keep down running costs) and TCT spurs on both sides
- Suitable for spindle moulders with manual feed



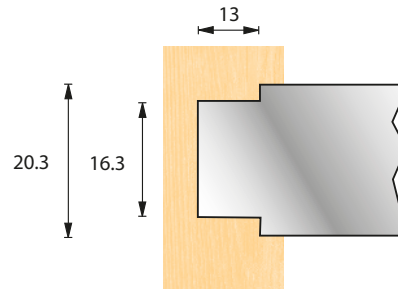
Euro Groove Head - 16.3mm

#	↔		
WHI289S00020	30mm		
WHI289S00010	1¼"		
Spares			
WHI030T00011	TC Blade	11 x 12 x 1.5mm	
WHI030T00015	TC Blade	15 x 12 x 1.5mm	
WHI030T00001	TC Spur	14 x 14 x 2mm	

Euro Groove Head

20.3mm / Ø 150mm - Doors

- Designed to produce a stepped groove in wooden doors for accommodating recessed hardware.
- Fitted with standard 11 and 15mm reversible TC tips (overlapped to keep down running costs) and TCT spurs on both sides
- Suitable for spindle moulders with manual feed



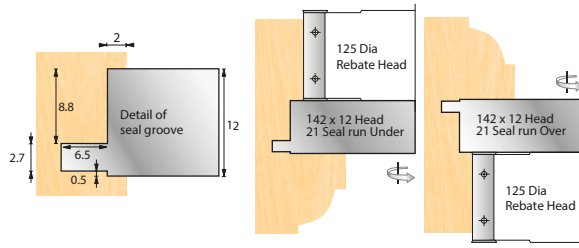
Euro Groove Head - 20.3mm

#	↔		
WHI289S00080	30mm		
WHI289S00090	1¼"		
Spares			
WHI030T00015	TC Blade	15 x 12 x 1.5mm	
WHI030T00019	TC Blade	19 x 12 x 1.5mm	
WHI030T00001	TC Spur	14 x 14 x 2mm	

TC Rebate Head

Aquamac Seal 21

- Designed to cut a slot groove into the rebate of door and window frames to suit AQ21 Weatherseals
- Tool runs in conjunction with 125mm dia rebate head to cut rebate and groove in one pass.
- Grooving slots are machined on both sides of the tool so it can be mounted both on top and underneath of the rebate head
- TC reversible main blades, 2.7 grooving tips and 14mm spurs



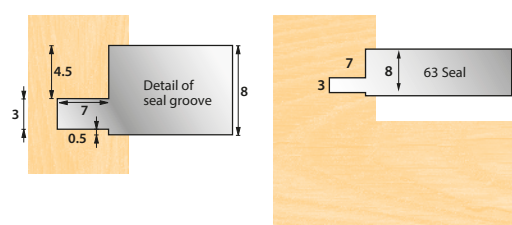
TC Rebate Head - Aquamac Seal 21

#	↔		
WHI270S00020	30mm		
WHI270S00030	1¼"		
Spares			
WHI030T00011	TC Blade	11 x 12 x 1.5mm	
WHI030T00001	TC Spur	14 x 14 x 2mm	
WHI026T00065	2.7mm Grooving Tip	2.7mm	

TC Rebate Head

Aquamac Seal 63

- Designed to cut a slot groove into the rebate of door and window frames to suit AQ63 Weatherseals
- Large 214mm dia tool allows to run above rebate section on spindle moulder
- Cutter head fitted with TC reversible blades, 14mm spurs on top and bottom, and 3mm grooving tip
- TC reversible main blades, 2.7 grooving tips and 14mm spurs



TC Rebate Head - Aquamac Seal 63

#	↔		
WHI270S00060	30mm		
WHI270S00070	1¼"		
Spares			
WHI030T00007	TC Blade	7 x 12 x 1.5mm	
WHI030T00001	TC Spur	14 x 14 x 2mm	
WHI026T00066	3.0mm Grooving Tip	3.0mm	

Consumables Spindle Tooling

Record Mortice Chisel & Bit

- Manufactured from high speed steel, accurately ground to size, and ready sharpened to ensure clean and fast cutting
- Available in a wide range of sizes from 1/4" to 1"



Record Mortice & Chisel Bit

#	↔
REC0150CB1/4	1/4"
REC0150CB5/16	5/16"
REC0150CB3/8	3/8"
REC0150CB1/2	1/2"
REC0150CB5/8	5/8"
REC0150CB3/4	3/4"
REC0150CB7/8	7/8"
REC0150CB1	1"

Draper Mortice Chisel & Bit

Expert Quality

- Expert quality
- Precision manufactured from high carbon steel, hardened and tempered.
- Bits are finely ground to size, sharpened and polished with honed cutting edges.



Draper Mortice & Chisel Bit

#	↔
DRA48014	1/4"
DRA48030	3/8"
DRA48056	1/2"
DRA48072	5/8"
DRA48080	3/4"

Reversible Planer Knives

Solid Carbide Planer Knives - Pair

- Precision ground blades with two cutting edges and reversible for extended life.



Reversible Planer Knives

#	↔	
XFZ321	75mm	Pair
XFZ322	80.5mm	Pair
XFZ323	82.5mm	Pair

Tersa HSS Planer Knives

Swiss Made HSS Planer Knives

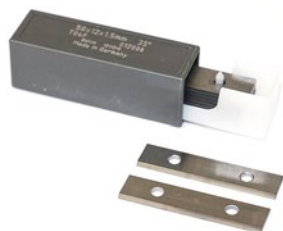
- High quality precision made Planer Knives manufactured in Switzerland
- Suitable for systems in planers, thicknessers, automatic molders, etc



Tersa HSS Planer Knives

#	↔
TER230HSS	230mm
TER310HSS	310mm
TER410HSS	410mm

TC Rebate Knives



TC Rebate Knives

#	↔
XJZ371	7.6 x 12 x 1.5mm
XJZ148	30 x 12 x 1.5mm
XJZ149	40 x 12 x 1.5mm
XJZ150	50 x 12 x 1.5mm
XJZ151	60 x 12 x 1.5mm
XJZ372	80 x 12 x 2.2mm

TC Rebate Spur



TC Rebate Spur

#	↔	
XJZ152	12 x 12 x 1.5mm	□
XJZ153	14 x 14 x 2.0mm	□
XJZ154	22 x 22 x 2.0mm	△

Available to Order: Bandsaw Blades

We are able to supply a range of high quality bandsaw blades in a wide range of sizes to suit your application.

For more information, please discuss your requirements with a member of our team.

☎ 08001 613613




Available to Order: Trend Spindle Tooling Range

We are able to supply a wide range of Trend Industrial Tooling products to meet the requirements of the modern woodworking industry.

This includes a comprehensive selection of spindle tools to suit a variety of different profiles and multi-profile cutter blocks with suitable knives and limitors.

To learn more, request your free **Industrial Tooling Catalogue**.

For more information and to request your **FREE** copy, please get in touch with a member of our team.

 08001 613613



Multi profile cutter heads with tool steel and Tungsten Carbide knives, Tungsten Carbide brazed tip tooling and disposable insert tooling.

Benefits;

- ✓ A clean and accurate cut.
- ✓ Harder carbide grade than standard brazed tip tooling as no heat is used in the manufacturing process.
- ✓ Quick to set up.
- ✓ Saves tooling costs.
- ✓ No re-sharpening costs.
- ✓ Profile always remains the same.



GROOVING



REBATING, PLANING & CHAMFERING



PROFILING



JOINTING



FRAME & PANEL DOOR



LAMELLO® BISCUIT BLADE



MULTI PROFILE SYSTEM